

ModemCOM
TMC-10x



Quick Start Guide
V2.1.1.18

Thank You for purchasing "ModemCOM" from Teltonika Ltd. We hope you will be happy using our product. Please find a few minutes to read this Quick Start Guide before beginning to work with "ModemCOM". This could prevent you from unwanted problems and save your precious time.

"ModemCOM" is a device designed for data transmission via GSM Network. The design of this modem enables the connection to your PC through COM interface. Once the modem is connected to the PC, you can get access to the Internet via one of the data transmission type the GSM is supported. "ModemCOM" supports the following data-bearers: EDGE, GPRS, CSF, CSD, HSCSD, and SMS.

PACKAGE CONTENTS

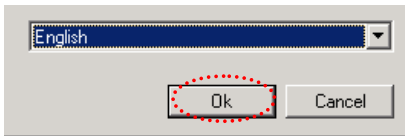
- 1) Carton.
- 2) "ModemCOM" modem.
- 3) RS232 connecting cable.
- 4) CD with User's Guide, drivers and Software.
- 5) External GSM antenna (just upon special orders).
- 6) AC/DC mains adapter.

HOW TO START QUICKLY?

Connecting to PC

- 1) Turn off your PC.
- 2) Insert the SIM card into modem. Follow the instructions on the device sticker. Make sure, the SIM card is pushed inside till it fixes.
- 3) Plug DB9 connector of the serial (RS232) cable into the modem.
- 4) Plug another end of the serial cable to one of the COM ports of PC.
- 5) Plug in the AC/DC adapter to power supply socket of "ModemCOM".
- 6) Plug in the AC/DC adapter to power supply network.
- 7) Turn on your PC.

Installing "Modem Control Tool"



1 Fig.

Step 1 - Open the "ModemCOM" Pack and take only the CD and plug the CD into the PC CD Drive.
 Step 2 - Wait till the system displays the screen " Select Setup Language".
 Step 3 - Select English and Click "OK" button. Following TELTONIKA Home screen will appear. (1 Fig.)



2 Fig.

Step 4 - Click "Install" button. Following screen will appear. (2 Fig.)



3 Fig.

Step 5 - Click "Next" button. Following screen will appear. (3 Fig.)



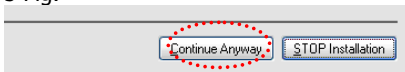
4 Fig.

Step 6 - Select „Complete" button. (4 Fig.)
 Step 7 - Click "Next" button. Following screen will appear.



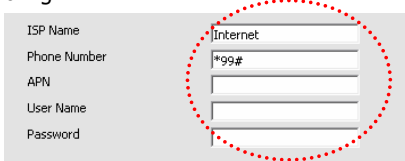
5 Fig.

Step 8 - Click "Install" button. (5 Fig.)



6 Fig.

Step 9 - "Hardware Installation" dialog box will appear, then press "Continue anyway" button in the dialog box. (6 Fig)



7 Fig.

Step 10 - Enter dial-up connection parameters and press "Next" in the opened dialog. (7 Fig.)

Note: APN, user name and password ask your GSM operator!



8 Fig.

Press "Finish" in the opened dialog box "Modem Control tool Setup". The installation is done. (8 Fig.)

Setting up an Internet connection

In this chapter we will provide you with general information and procedures necessary for setting up an Internet connection in your PC. When using "Modem Control Tool", the Internet connection settings are determined automatically. Before you begin make sure that:

- You have a GSM SIM card with activated data transfer service.
- "ModemCOM" is ready to work – SIM card is pushed in, the device is correctly connected to the PC, the drivers are properly installed.
- Dial-up networking is installed on your PC (OS).
- TCP/IP protocol is installed on your PC.

Then you using "ModemCOM" you can get access to the Internet via one of this data transmission types:

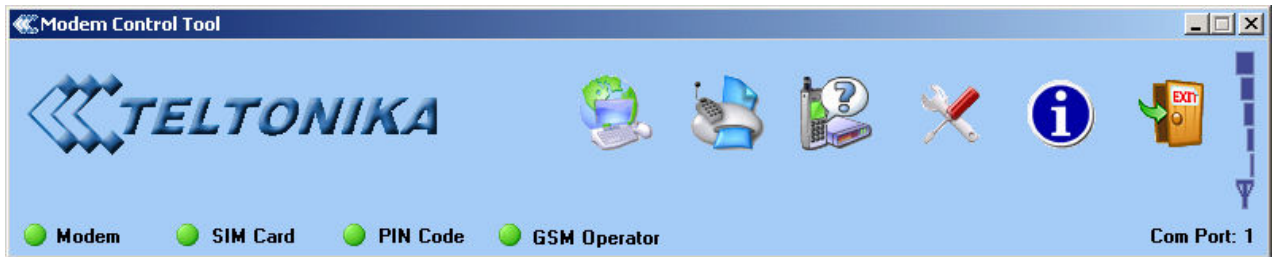
- GPRS/EDGE packet data transfer. In this case you have to know APN, user name and password.
- CSD/HSCSD data transfer. You have to know a phone number of a dial-up server.

If GPRS/EGDE data transfer is used, you have to set up an APN (Access Point Name), ISP, phone number, if need user name and password:

- 1) Start "Modem Control Tool".
- 2) Select "Program settings".
- 3) Select "GPRS Settings".
- 4) Enter the APN.
- 5) Before connecting to the Internet you need in "GPRS Settings" window ("Program Settings" -> "GPRS Settings") to set up "ISP" and "Phone Number" (*99#).

Getting connected to the Internet

1. The dial-up connections being set, start "Modem Control Tool" program. The program can be started also from the PC desktop (or „Start" -> "Programs" -> "Modem Control Tool" -> "Modem Control Tool") while clicking on the shortcut. When the shortcut will be clicked, "Modem Control Tool" dialog box will be opened.



Picture 9. "Modem Control Tool" dialog box

2. The program should automatically detect a connected modem. If this does not happen, select "Autodetect" function in the field "Modem settings". This function being set, press "Autodetect Modem" button. The program will find a connected modem. Click "Connect" in order to get access to the Internet.

3. When "Connect" is clicked, the modem will start establishing connection to the Internet.

Sending SMS

Note: please make sure that SMS service is supported by your operator.

Note: please ensure that SMS centre number is defined it ("Modem Control Tool", "Program Settings" -> „SMS Settings"). If it isn't, ask your GSM operator for SMS centre number and enter it.

- 1) Run "Modem Control Tool".
- 2) Click "Short Messages Service".
- 3) Enter recipient phone number.
- 4) Enter the text.
- 5) Click "Send".

Wait for a dialog box, which will inform you about successful or unsuccessful procedure.

INDICATION

"ModemCOM" has 2 LEDs for indication. They are located at the top part of the device. Due to these indicating LEDs we can determine in which mode is the device operating, are there any shortcuts in its functionality or not. The indication status of the modem is given in the Table 1.

Table 1. Description of modem status

"Power" is on	Power supply is connected
"Status" is green and blinking	Modem is powering up
"Status" is green	The device is ready to use
"Status" is yellow and blinking	No SIM card inside, no PIN code entered or any possibility to connect to the GSM Network
"Status" is yellow	The device has successfully connected to the Network for data transfer

TROUBLESHOOTING

- 1) Problem: "Modem Control Tool" doesn't detect the modem.
Solution: Check if the device is connected, green LED is on and yellow LED is blinking.
- 2) Problem: Can't connect to the Internet,
Solution: Check if you plugged the device to the same COM port as you installed the driver.



This sign on the package means that it is necessary to read a User Manual, which is on the CD before you start using the device.



This sign on the package means, that used electronic and electric equipment should be stored separately.

FINAL NOTES

For more information, please read "ModemCOM" User Manual, which is found on the CD. If you have faced some problems using the device, which you are not able to solve by yourself, you are always welcome to address our technical support department by e-mail support@teltonika.lt. We will be very glad to help you.