

Document Name: **GPRS Startup**
Version: **01.00**
Date:
DocId: **GPRS Startup_V01.00**
Status: **Created**

SCOPE

Thanks you select Nowacom GSM/GPRS terminal.

This product has standard AT command interface, and can provide GSM call, short message and GPRS net services, etc.

Please read this user guide carefully. You can realize the powerful function and the easy operation method of the module.

This module is used in voice or data communication mainly. We are not charge with the duty of personal injury and property loss for the custom abnormal operation. Please design the corresponding product according to the technical specification and reference in the handbook. And note the general safe item when use mobile product especially GSM product.

This document is subject to change without notice at any time.

Revision History

Chapter	Page	What is new

Contents

1. Introduction	5
1.1 References	5
1.2 Abbreviations.....	5
2. What you need.....	6
2.1 GPRS settings from your network provider	6
2.2 Modem installation and configuration.....	6
2.3 Dial-Up network installation and configuration.....	6
3 Setting up a Windows modem driver	7
3.1 Adding a new modem.....	7
3.2 Configuring the modem driver	9
4 Setting up the Dial-Up network.....	10
4.1 Adding a new connection	10
4.2 Configuring the setting	11
5 Getting Started.....	12

1. Introduction

This document describes how to establish a PPP connection with Microsoft Windows NT4.0 using the prototype of GSM/GPRS. Configurations and settings for other operating systems (Windows 95/98) may slightly differ, but the general proceeding is similar.

1.1 References

1.2 Abbreviations

APN	Access Point Name
CHAP	Challenge Handshake Authentication Protocol
CID	Context Identity
DHCP	Dynamic Host Configuration Protocol
DNS	Domain Name Server
DSB	Developer Support Box
GPRS	General Packet Radio Service
GSM	Global System of Mobile Communication
IP	Internet Protocol
OS	Operating System
PDP	Packet Data Protocol
PIN	Personal Identification Number
PPP	Point to Point Protocol
QoS	Quality of Service
RAS	Remote Access Service
ROM	Read Only Memory
SIM	Subscriber Identity Module
TCP	Traffic Control Protocol

2. What you need

2.1 GPRS settings from your network provider

Before you can set up your device to access the GPRS network, contact your network provider to obtain the GPRS service.

2.2 Modem installation and configuration

You will need to set up the modem driver. Follow the steps in chapter 3.

Note:

Administrator rights for the operation system may be needed in order to install modem driver. Connect your local system administrator for advice.

2.3 Dial-Up network installation and configuration

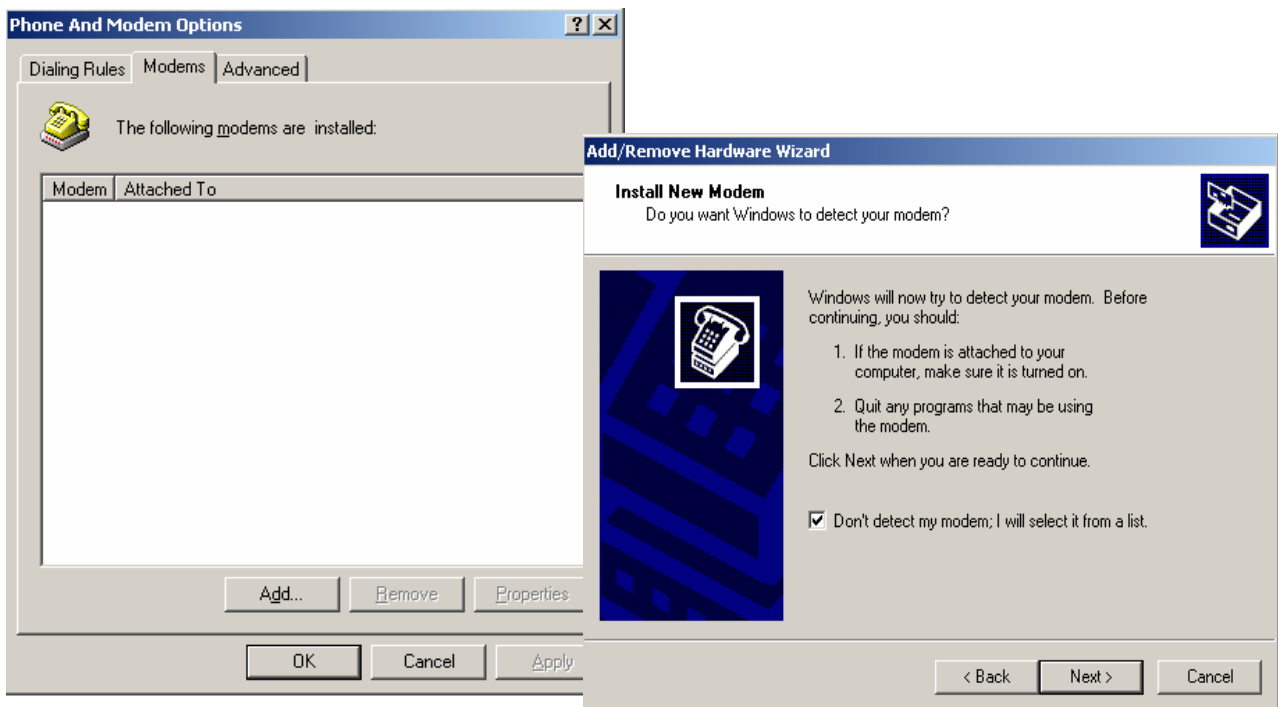
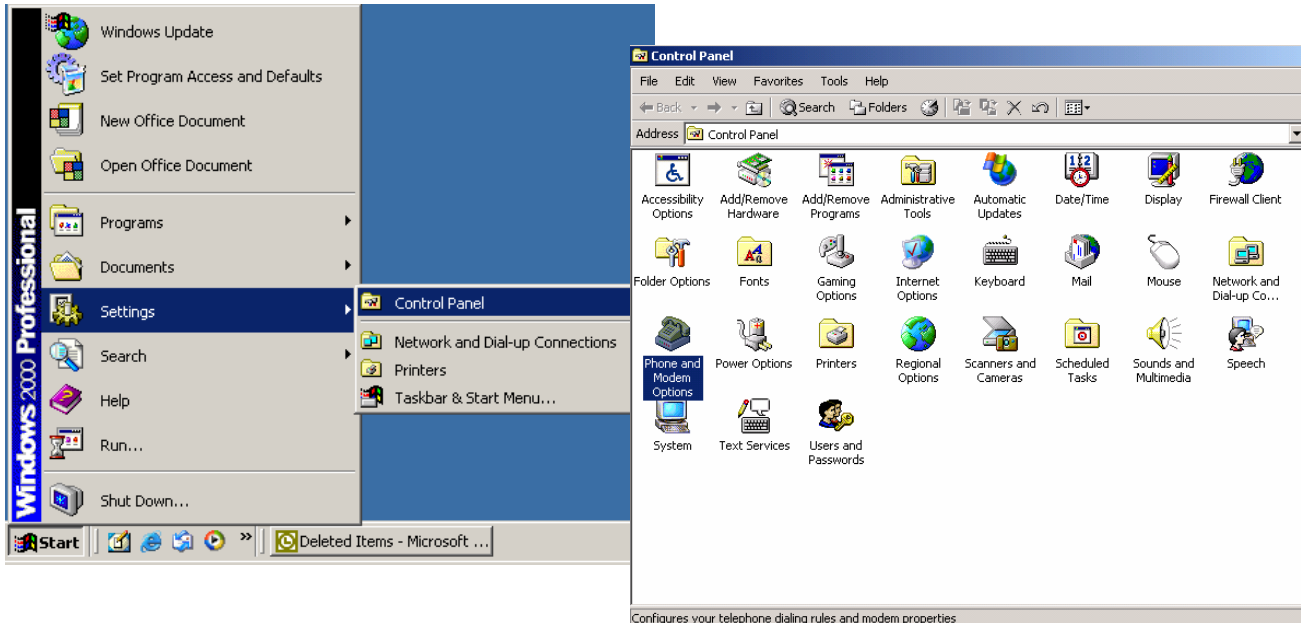
You will need to set up the Dial-Up network. Follow the steps in chapter 4.

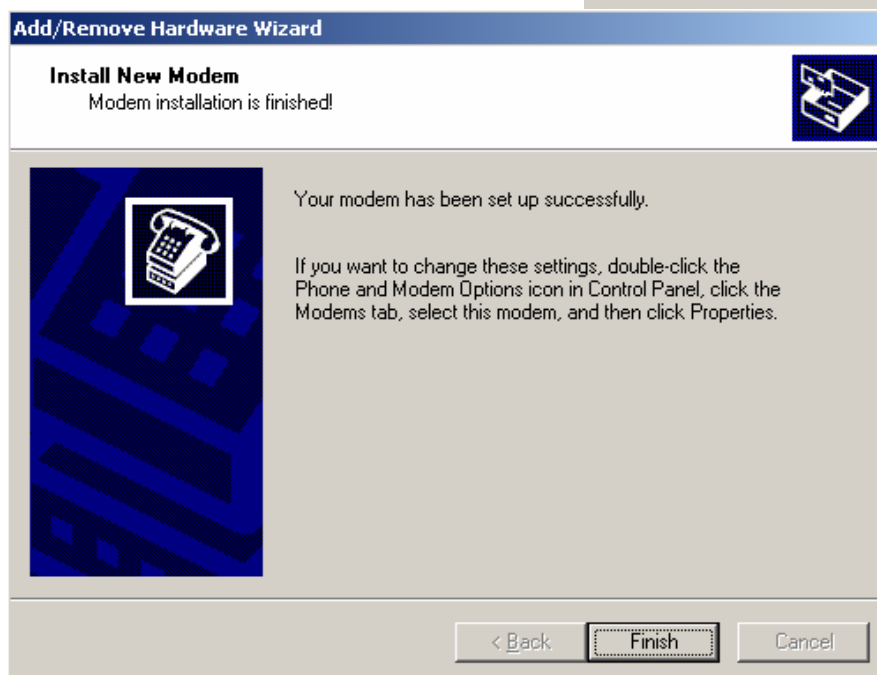
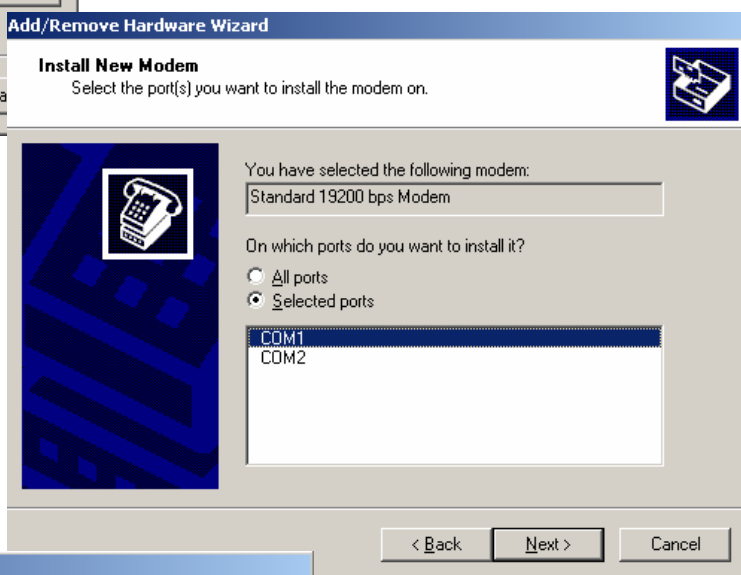
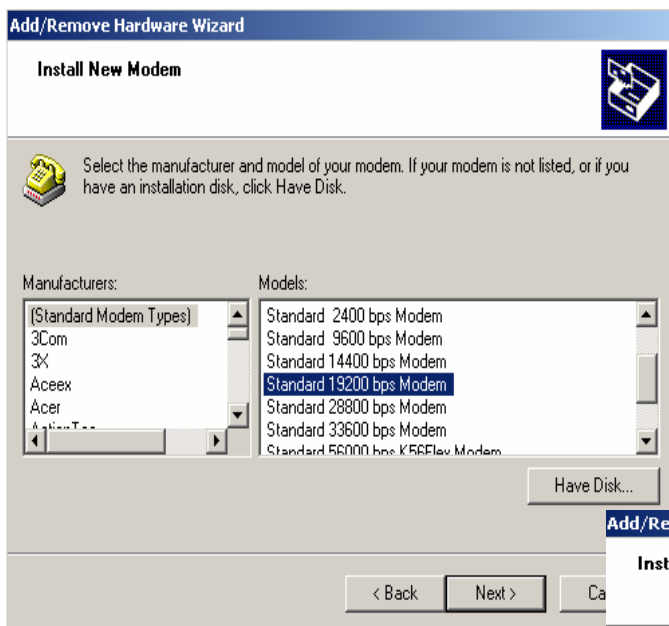
3 Setting up a Windows modem driver

3.1 Adding a new modem

If no standard 19200bps modem has been installed, add a new standard modem to the modem section of the control panel.

Click Start -> Setting -> Control Panel -> Phone and Modem option -> Modem -> add

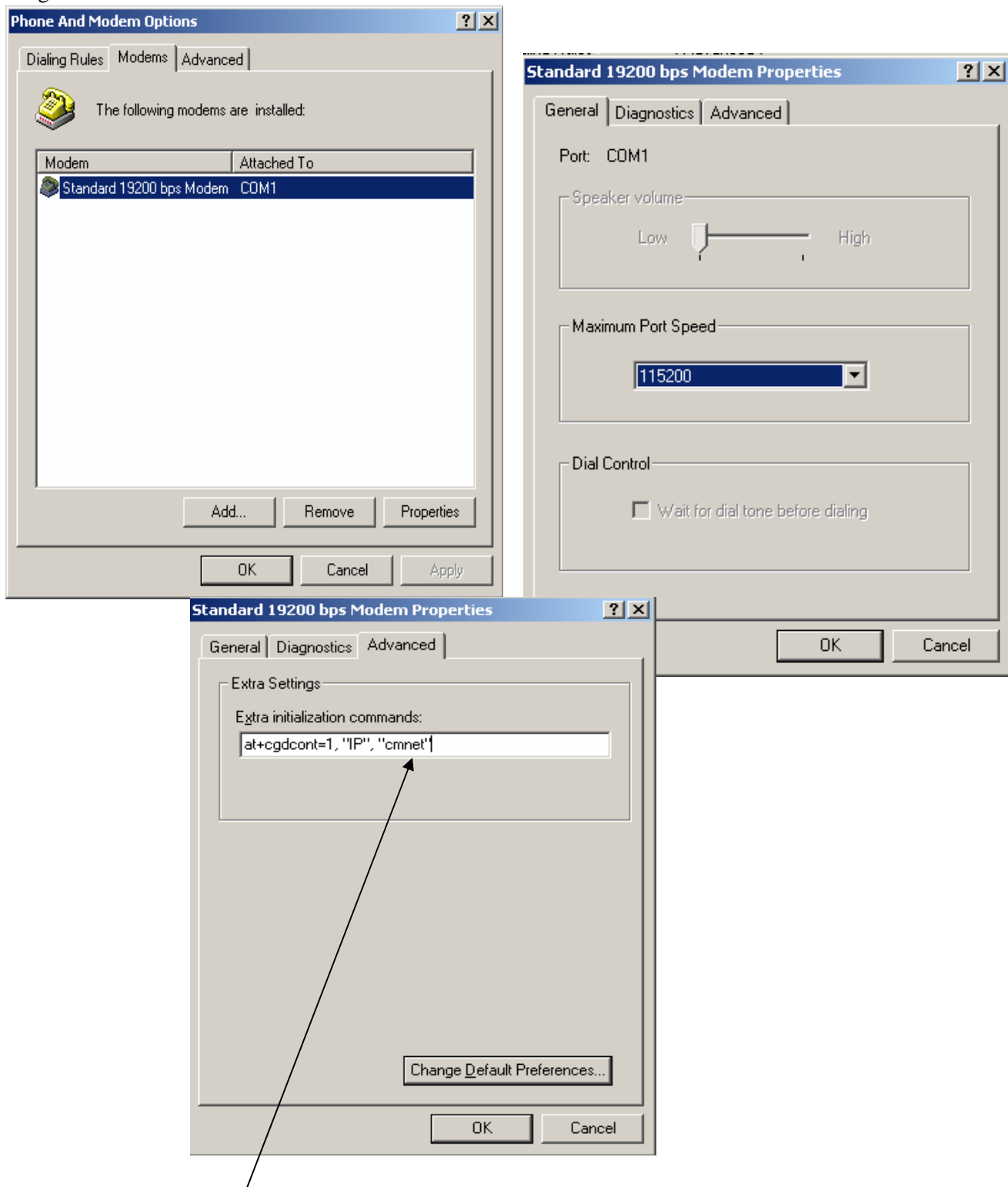




Follow the instructions on the screen and choose “19200 bps modem” and “COM1”, click “NEXT”, till to finish the configuration.

3.2 Configuring the modem driver

Choose the installed standard 19200bps modem, click “**Property**”, choose it max port speed (default value: 115200), and click “**Advanced**” to configure “**Extra setting**” as illustrated in the figures below.

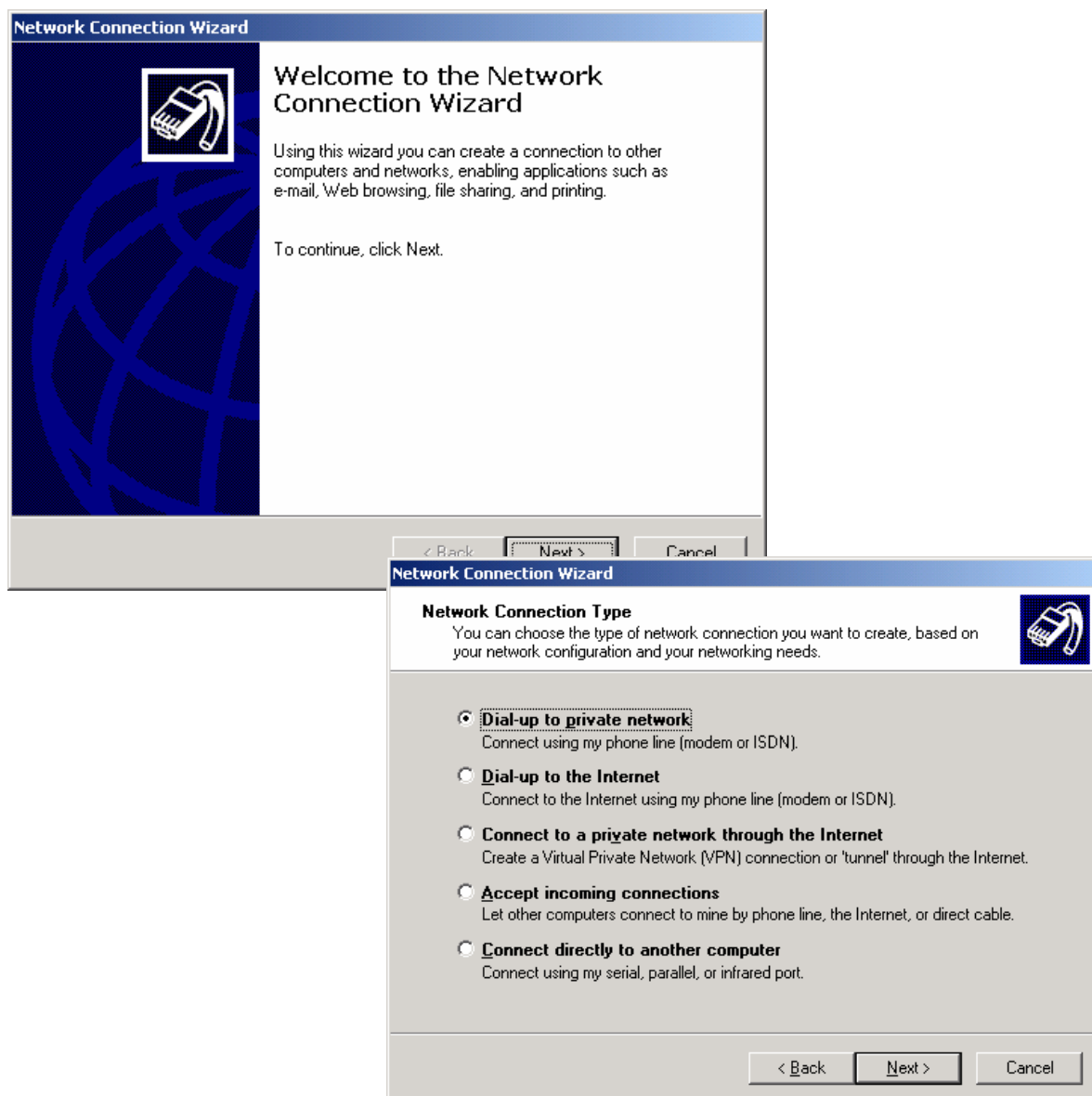


You can change the “cmnet” to your access point name (APN).

4 Setting up the Dial-Up network

4.1 Adding a new connection

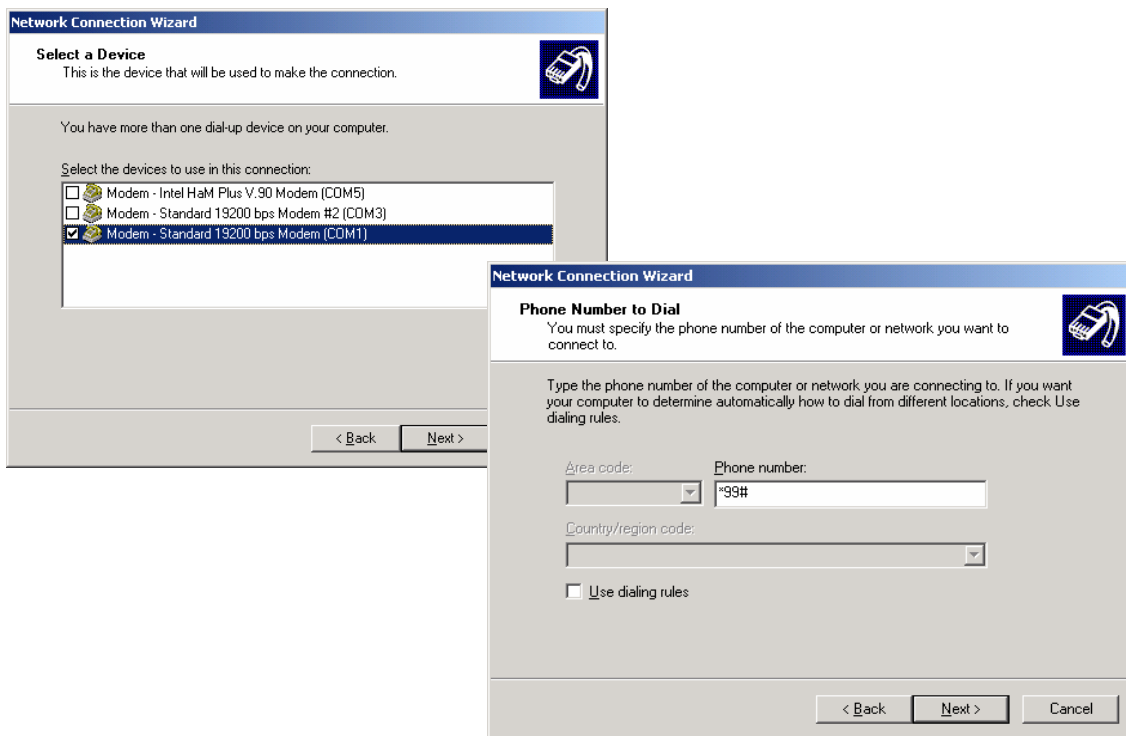
From the control panel select “**Network and Dial-Up Connections**” and then “**Make new connection**”.



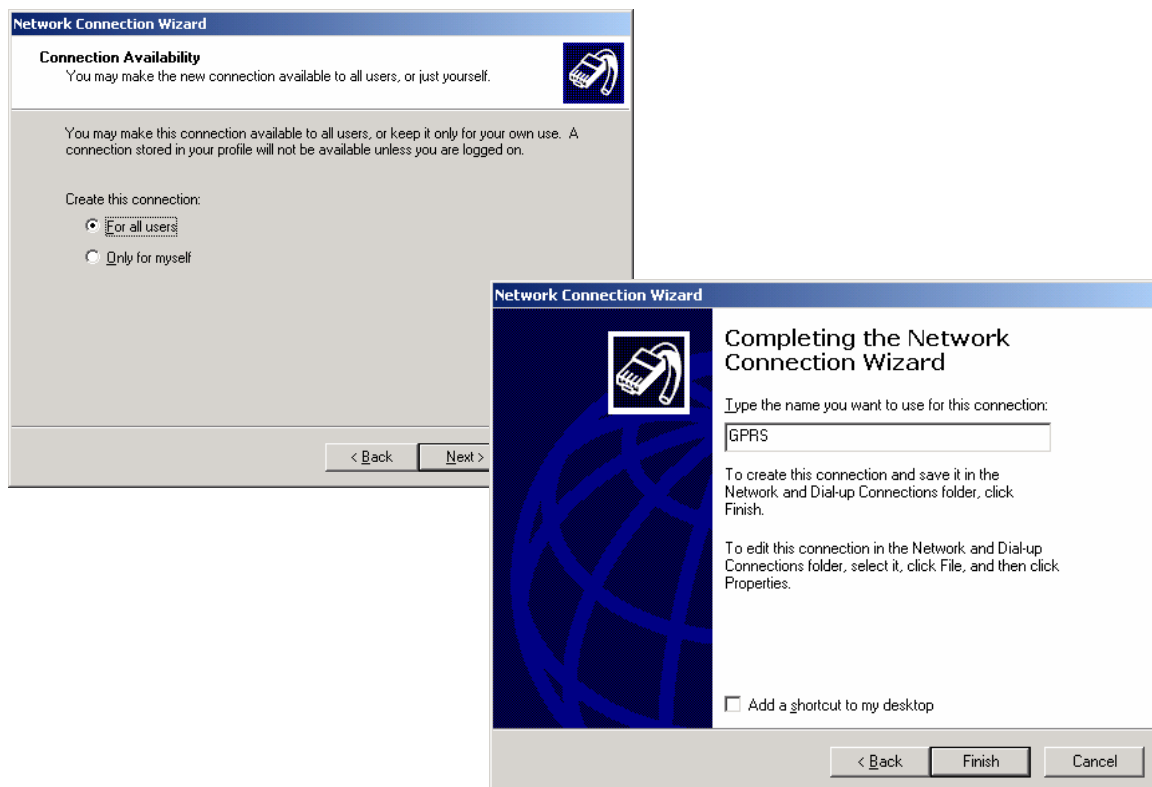
Select “**Dialup to private network**” -> click “**Next**”

4.2 Configuring the setting

Choose Modem – standard 19200bps modem (COM1) -> Click “Next”



Type the number of GPRS connection (not select “use dialing rules”) -> Click “Next”

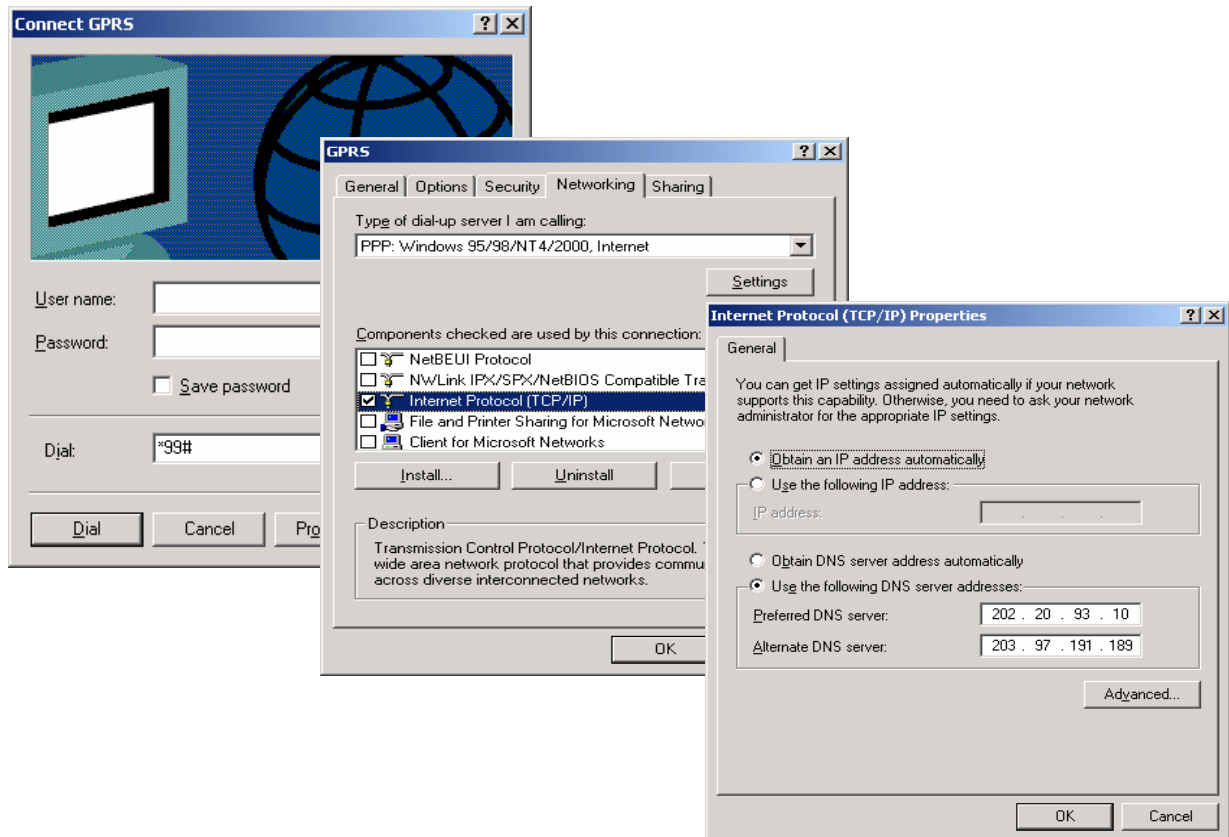


Choose “For all users” -> Click “Next”

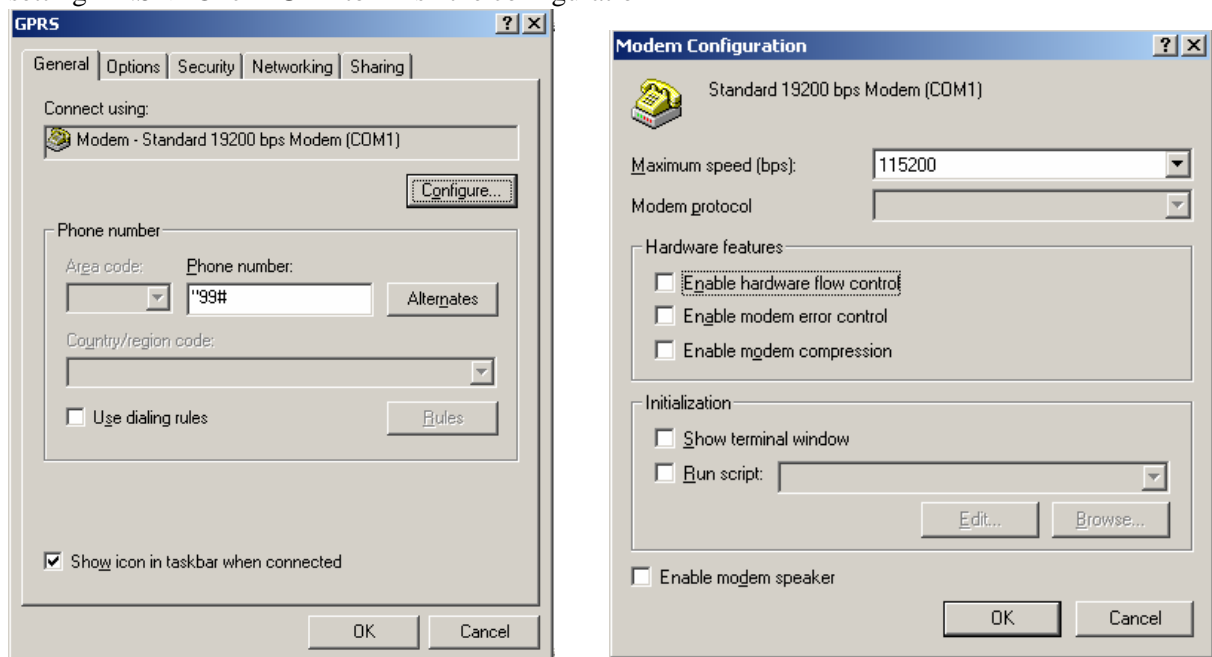
Type the name you want to use for this connection (such as “GPRS”) -> Click “Finish”

5 Getting Started

Ensure the “User name” and “Password” are blank



-> Choose “Networking” tab, only choose “Internet protocol (TCP/IP)” -> Click “Properties”, setting DNS -> Click “OK” to finish the configuration



-> Click “Setting”, configure the max speed “115200” Click “OK”, the connection is complete -> Click “Dial”

